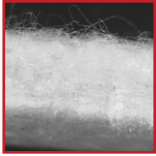


Increased filter life

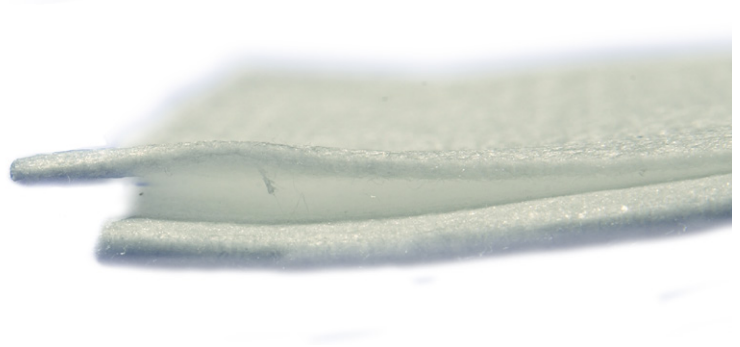


IFM's PROflo+™ filter bag series is designed for longer service life. The PROflo+™ high performance felt media consists of a unique blend of fine fibers combined to create a thicker, loftier felt media with greater void space. The result is dirt loading capacity improvements of as much as 2 to 4 times compared to the equivalent standard felt product. Longer service life translates into fewer change-outs and lower operating costs. As with standard felt, the PROflo+™ media is available in both polypropylene and polyester, is surface treated to prevent downstream fibre migration and is available in FDA and EU compliant food grade formats.

Engineered Retainer



CALL PROflo+™ filter bags come standard with the PolyformSEAL™ retainer. Available in both polypropylene and polyester resins, the PolyformSEAL™ is a flexible chemically resistant retainer which fits into most filter housings. Our exclusive PolyformSEAL™ retainer is designed with four sealing points to ensure bypass free filtration. The integral handles have a raised profile for ease of installation and removal. In addition, the PolyformSEAL™ is manufactured in our onsite injection moulding facility which ensures the retainers meet our stringent quality requirements. The PolyformSEAL™ provides user friendly filtration that will save time and money.



100% Welded Seams



Fully welded using the most advanced welding technologies, the PROflo+™ filter bag series provides worry free filtration. The thermally bonded ultra-strong seams eliminate the use of threads and the opportunity for bypass caused by needle holes created by the traditional sewn seams. The result is a filter with excellent seam integrity and improved filtration efficiencies.

Embossed Media and Micron



PROflo+™ filter bag series are embossed with the filter media and micron rating to allow for quick and easy product identification. Traditional paper tags are either removed or destroyed in filtration applications which can lead to misidentification and result in costly production errors. By heat embossing the felt surface, a permanent marking on the filter is created which helps to ensure easy identification and reduce the probability of production errors.

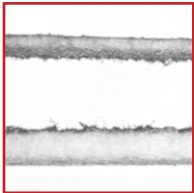
INCREASED FIBRE, MORE LOFT, LONGER SERVICE LIFE



Available with steel ring retainer



Fully Welded Seams



Increased loft and void volume for higher dirt loading

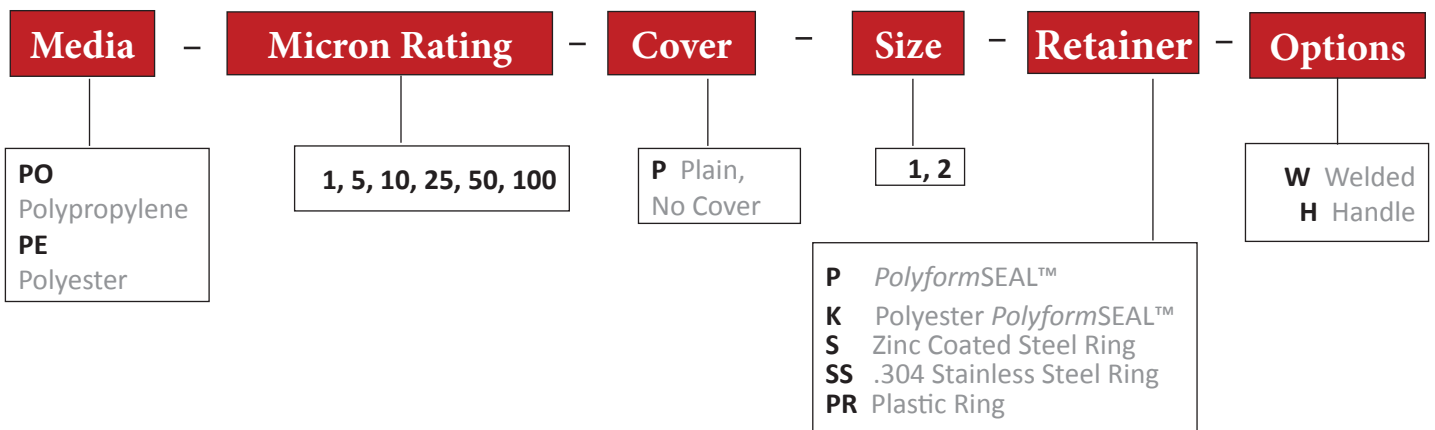


Embossed Media and Micron

| FILTER DIMENSIONS | | | MAXIMUM FLOW RATE | |
|---|---------------|----------------|-------------------|-------------------|
| Size | Dimension | | gpm | m ³ /h |
| 1 | 7 Ø x 16.5 in | 178 Ø x 419 mm | 80 | 18 |
| 2 | 7 Ø x 32 in | 178 Ø x 813 mm | 150 | 34 |
| Maximum Operating Temperature | | | | |
| PO Polypropylene felt | | | 200 °F | 93 °C |
| PE Polyester felt | | | 275 °F | 135 °C |
| Recommended change out at a maximum differential pressure of 1.72 bar | | | | |

Applications

- Automotive
- Food, beverage and Petrochemical
- Paint, coatings, ink and adhesives
- Oil & Gas



Product Codes Example: **PEXL 1 P2PW**